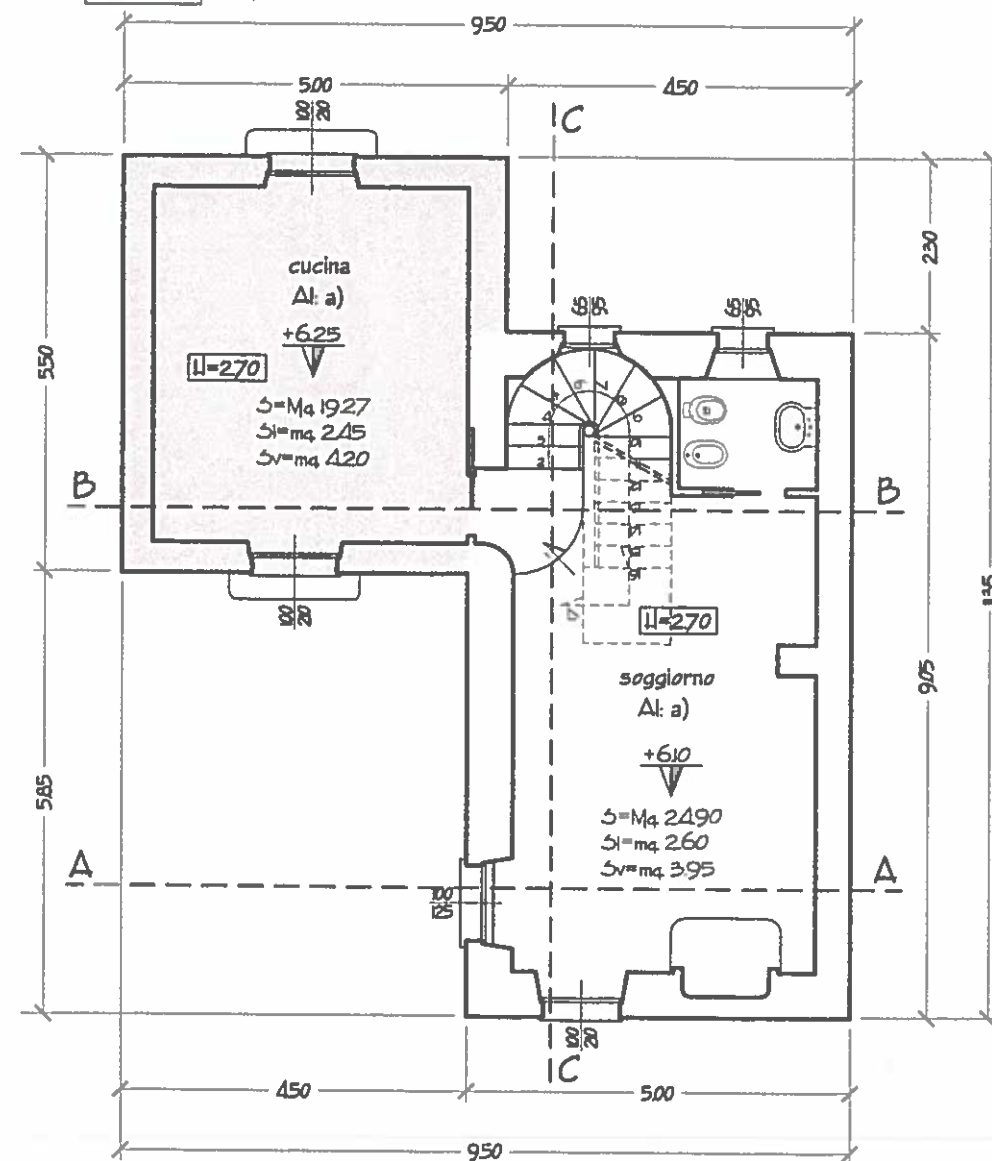
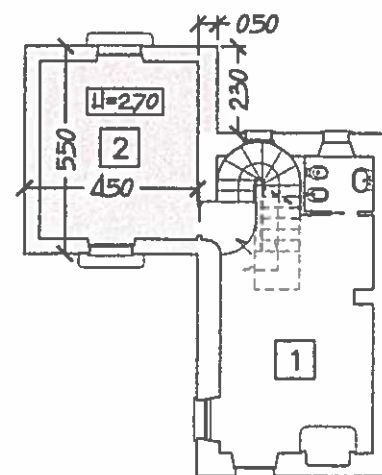


PIANTA PIANO TERRA 1:100

ampliamento



CALCOLO INDICI EDILIZI"



VOLUME DELL'AMPLIAMENTO

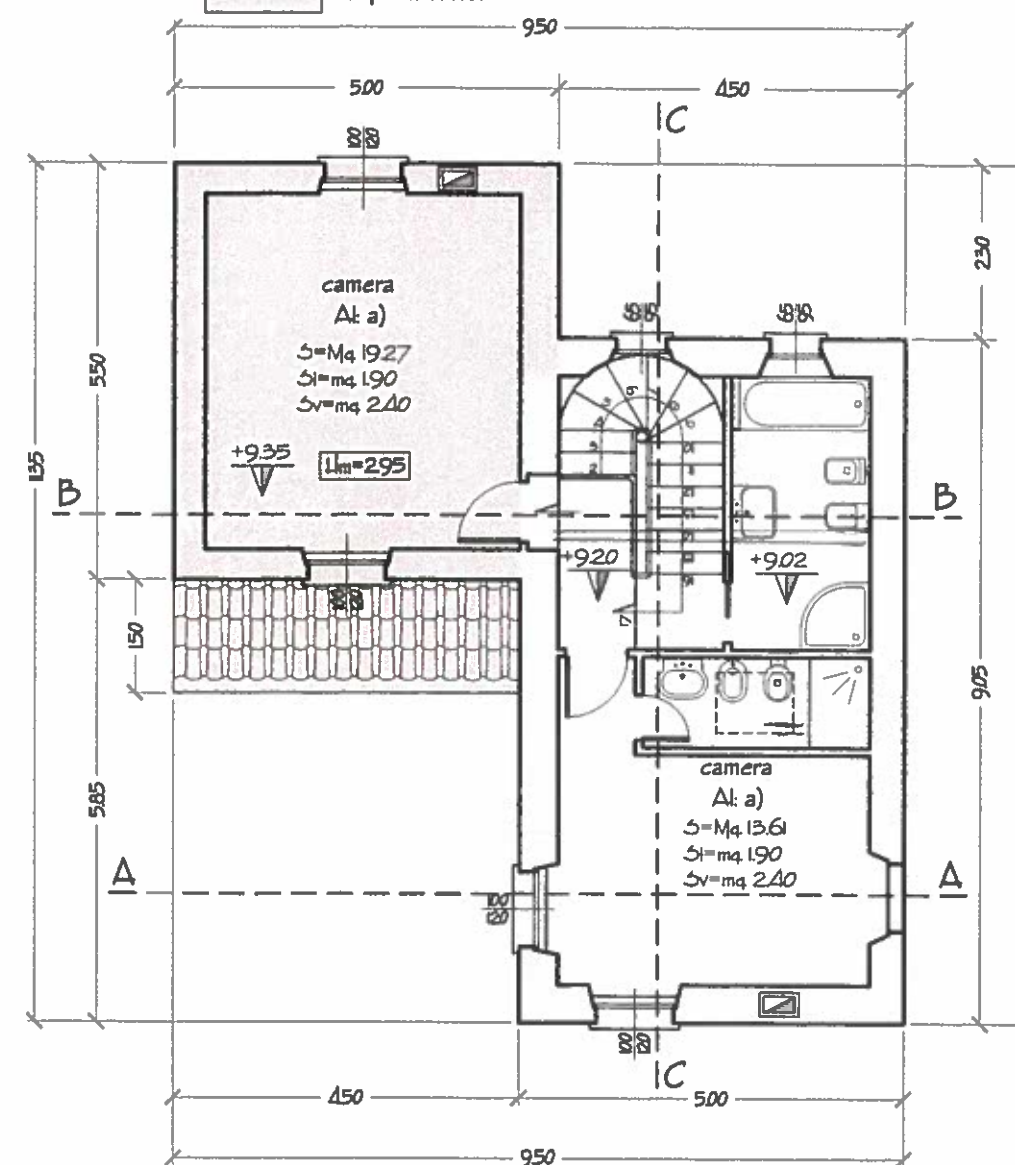
$5.50 \times 4.50 \times 2.70h = \text{mc. } 66.83$
 $2.30 \times 0.50 \times 2.70h = \text{mc. } 3.10$
TOTALE MC. 69.93

TABELLA

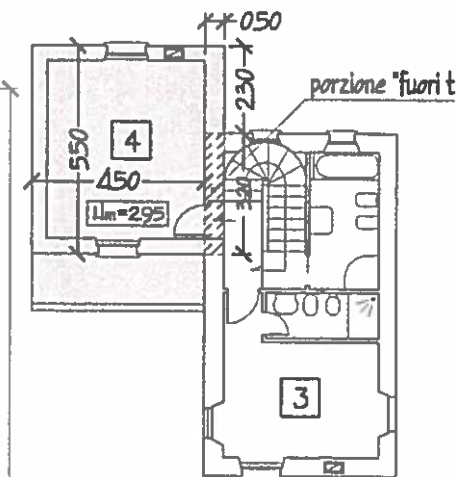
| pos. | destinaz. | superf. mq. | SI mq. | SV mq. |
|------|-----------|--------------|-------------|-------------|
| 1) | soggiorno | 24.90 | 2.60 | 3.95 |
| 2) | cucina | 19.27 | 2.45 | 4.20 |
| | | 44.17 | 5.05 | 8.15 |

PIANTA PIANO PRIMO 1:100

ampliamento



CALCOLO INDICI EDILIZI"



VOLUME DELL'AMPLIAMENTO

$5.50 \times 4.50 \times 2.95hm = \text{mc. } 73.01$
 $2.30 \times 0.50 \times 2.95hm = \text{mc. } 3.56$
 $3.20 \times 0.50 \times 1.45hm = \text{mc. } 2.32$
TOTALE MC. 78.89

TABELLA

| pos. | destinaz. | superf. mq. | SI mq. |
|------|-----------|--------------|-------------|
| 3) | camera | 13.61 | 1.90 |
| 4) | camera | 19.27 | 1.90 |
| | | 32.88 | 3.80 |